



## PRODUCT LINE UP FW17

### NEUTRAL



#### VANQUISH 3

MENS: HEEL 32MM | FOREFOOT 27MM  
 WOMEN: HEEL 30MM | FOREFOOT 25MM  
 DROP: 5MM  
 WEIGHT: MENS 295G | WOMEN 252G  
 TECH: SUSPENSION FRAME

### STABILITY



#### ARAHI

MENS: HEEL 29MM | FOREFOOT 24MM  
 WOMEN: HEEL 28MM | FOREFOOT 23MM  
 DROP: 5MM  
 WEIGHT: MENS 265G | WOMEN 215G  
 TECH: J-FRAME

### SPEED



#### CLAYTON 2

MENS: HEEL 24MM | FOREFOOT 20MM  
 WOMEN: HEEL 23MM | FOREFOOT 19MM  
 DROP: 4MM  
 WEIGHT: MENS 235G | WOMEN 198G  
 TECH: RMAT | PRO2LITE

### TRAIL



#### SPEEDGOAT 2

MENS: HEEL 32MM | FOREFOOT 27.5MM  
 WOMEN: HEEL 31MM | FOREFOOT 26.5MM  
 DROP: 4.5MM  
 WEIGHT: MENS 278G | WOMEN 233G  
 TECH: CMEVA FOAM | VIBRAM MEGAGRIP | RMAT

### TRAIL SPEED



#### SPEED INSTINCT 2

MENS: HEEL 23MM | FOREFOOT 20MM  
 WOMEN: HEEL 22MM | FOREFOOT 19MM  
 DROP: 3MM  
 WEIGHT: MENS 270G | WOMEN 226G  
 TECH: PRO2LITE



#### CLIFTON 4

MENS: HEEL 29MM | FOREFOOT 24MM  
 WOMEN: HEEL 28MM | FOREFOOT 23MM  
 DROP: 5MM  
 WEIGHT: MENS 265G | WOMEN 215G  
 TECH: FULL EVA MIDSOLE



#### CHALLENGER ATR 3

MENS: HEEL 29MM | FOREFOOT 24MM  
 WOMEN: HEEL 28MM | FOREFOOT 23MM  
 DROP: 5MM  
 WEIGHT: MENS 269G | WOMEN 226G  
 TECH: FULL EVA MIDSOLE | 4MM ATR GRIP

## TECHNOLOGY



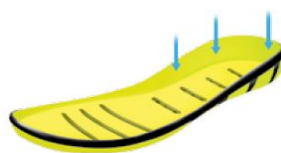
#### MIDSOLE VOLUME

- Premium shock absorption
- Superior comfort
- Designed for performance on all distances



#### META-ROCKER GEOMETRY

- Support of a runner's natural running gait
- A smooth roll from impact to toe-off
- Designed to increase running efficiency



#### ACTIVE FOOTFRAME

- Integrated stability
- Adaptability to a wide range of feet and styles
- A comfortable option to traditional post support



#### J-FRAME

- Designed to combat over-pronation
- Guides foot without rigid or unforgiving materials
- Stability - maintains cushion and lightweight



#### PRO2LITE

- Softer cushioning for protection (heel)
- Firmer cushioning for propulsion (forefoot)
- A fast and comfortable ride